
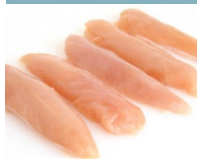


Sam & Sam Meats

851 Upland Ave Upland, Pa 19013 (610) 874-9484 Sales AD: 3/26 – 4/1/25

	Family Pack Fresh Ground Beef <u>\$3.99 LB</u>		USDA Choice Eye Round Roast <u>\$5.69 LB</u>		USDA Choice Boneless Pepper Steaks <u>\$6.29 LB</u>
	USDA Choice Chuck Fillet Steaks <u>\$5.99 LB</u>		USDA Choice Top Round London Broil <u>\$5.99 LB</u>		USDA Choice Cubed Steaks <u>\$5.99 LB</u>
	USDA Thick or Thin Delmonico Steaks <u>\$13.99 LB</u>		USDA Thick or Thin Boneless Sirloin Tip Steaks <u>\$6.89 LB</u>		USDA Choice Bone-In Beef Flanken Rib <u>\$7.99 LB</u>
	USDA Choice Beef Stir Fry <u>\$6.99 LB</u>		USDA Choice Bolar Roast <u>\$5.49 LB</u>		Family Pack USDA Choice Beef Cubes <u>\$6.29 LB</u>
	USDA Choice Shoulder Steaks <u>\$5.99 LB</u>		USDA Choice Butter Steaks <u>\$7.29 LB</u>		USDA Choice Shoulder Combinations <u>\$5.99 LB</u>
	Family Pack Loin End Pork Chops <u>\$1.59 LB</u>		Family Pack Rib End Pork Chops <u>\$1.69 LB</u>		Family Pack Center-Cut Pork Chops <u>\$2.39 LB</u>
	Fresh Spare Ribs <u>\$2.99 LB</u>		Fresh Boston Pork Butts <u>\$1.99 LB</u>		Fresh Pork Shoulders <u>\$1.69 LB</u>
	Cry-O-Vac Pork Tenderloins <u>\$2.99 LB</u>		Smoked Hocks Or Neck Bones <u>\$2.39 LB</u>		Fresh Pork Bellies <u>\$2.99 LB</u>
	Family Pack Chicken Drumsticks <u>\$0.99 LB</u>		Family Pack Chicken Leg Quarters <u>\$0.89 LB</u>		Family Pack Chicken Wings <u>\$2.49 LB</u>



Family Pack
Chicken Tenders
\$2.99 LB



Family Pack
Chicken Cutlets or
Chicken Stir Fry
\$3.99 LB



Family Pack
Chicken Chip Steak
\$3.99 LB



Cornish
Game Hens
\$2.99 LB



Family Pack
Chicken Gizzards
\$1.89 LB



Frozen
Boneless Leg of Lamb
\$5.99 LB



Dietz & Watson
Honey Turkey
Save \$1.50 LB
\$7.49 LB



Dietz & Watson
Honey BBQ Chicken
Save \$1.50 LB
\$5.99 LB



Hatfield
Black Pepper Ham
Save \$0.40 LB
\$5.59 LB



Hormel
Premium Cooked Ham
Save \$0.30 LB
\$3.39 LB



Jennie-O
Smoked Turkey
Save \$1.00 LB
\$5.49 LB



Jennie-O
Honey Smoked Turkey
Save \$0.60 LB
\$5.99 LB



Provolone
Cheese
Save \$0.30 LB
\$4.69 LB



Clearfield
American Cheese
\$4.59 LB



Dietz & Watson
Franks 24 Count
Regular **\$10.79 EA**
Beef **\$13.49 EA**



Tropicana Refreshers
Punch or Lemonade 46 FO
Assorted Varieties
2/\$6.00



Borden
Shredded Cheese 7-8 OZ
Assorted Varieties
2/\$5.00



Turkey Hill
Iced Tea or Drinks 64 FO
Assorted Varieties
3/\$5.00



Imperial
Spread Quarters
16 OZ
2/\$3.00



Friendly's Premium
Ice Cream 48 FO
Assorted Varieties
\$3.99 EA



Totino's
Pizza Rolls 15 Count
Assorted Varieties
2/\$7.00



P.F. Chang's Home
Menu Meals 20-22 OZ
Assorted Varieties
\$6.99 EA



Best Yet
12 Count Can Soda
Assorted Varieties
\$3.99 EA



Best Yet
Pasta 12-16 OZ
Excludes: Lasagna
4/\$5.00



Chef Boyardee
Canned Pasta 14.5-15 OZ
Assorted Varieties
2/\$3.00



Ragu
Pasta Sauce 24 OZ
Assorted Varieties
\$2.19 EA



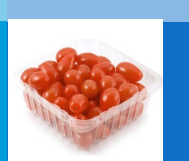
Best Yet
Drinking Water
24 Count
\$2.99 EA



Fresh
Romaine Hearts
\$2.89 EA



Fresh
Celery Hearts
\$1.69 EA



Pint Size Container
Grape Tomatoes
\$1.69 EA